

EXPERIENCE WITH W2W FROM VESSEL TO OIL&GAS INSTALLATIONS



SOV SEMINAR – OFFSHORE NORGE
Quality Hotel Ulstein, 21.10.2024

Trond Skodjevåg Bø
Island Offshore Management AS






ISLAND OFFSHORE

- HQ located at "Naustloftet", Stålhaugen 12 in Ulsteinvik
- Established in 2002 by Borgstein AS, led by Morten and Håvard Ulstein, both with a long history within the Ulstein and Rolls Royce Marine Group (currently Kongsberg Maritime)
- In April 2004 the Edison Chouest Offshore Group of Louisiana, USA became partners and co-owners, and took delivery of our first vessel, Island Frontier.
- The Island Offshore Group owns and operates a modern and versatile fleet of 19 advanced and high-quality service vessels, with 2 new vessels coming in 2027.



Diverse and specialized offshore fleet

Mooring & Installation	LWI	Subsea Installation & Maintenance	Well Stimulation	W2W	Supply & Logistics
3 AHTS vessels	2 LWI vessels	3 SCV vessels	3 WS vessels	2 W2W vessels	6 PSV vessels
					
<ul style="list-style-type: none"> ▪ Versatile vessels with impressive track record ▪ Equipped for deep water anchor handling and mooring ▪ Fully integrated ROV support ▪ Island Victory – the world’s strongest AHTS 	<ul style="list-style-type: none"> ▪ Specialized engineered solutions for Riserless Light Well Intervention ▪ Strong cost and payback incentive for clients ▪ Partnership with TIOS (TFMC) 	<ul style="list-style-type: none"> ▪ Subsea construction, ROV, survey, IMR ▪ Global operations ▪ 2 NEWBUILDINGS to be delivered in 2027 	<ul style="list-style-type: none"> ▪ Well stimulation vessels especially equipped for transporting and handling liquid cargo and chemicals ▪ Vessels equipped with acid storages, blender equipment, and separate stimulation pump rooms 	<ul style="list-style-type: none"> ▪ Three vessels with various adaptations operating in Oil & Gas and Offshore Wind segment, all with gangway systems installed. ▪ Two different designs where one vessel is classed with SPS100 and two are classed with SPS60. 	<ul style="list-style-type: none"> ▪ One of the largest North Sea fleets of advanced PSVs ▪ Two vessels operate on pure LNG combined with battery package ▪ In total five vessels with ESS hybridization, with a fifth decided.



W2W fleet

- Experience with W2W since 2012



MV ISLAND DILIGENCE

W2W



MV ISLAND CROWN

W2W



MV ISLAND CLIPPER

PSV/W2W



MV ISLAND CONDOR

PSV/W2W



Trianel



equinor



PERENCO



ISLAND OFFSHORE

W2W

- Extensive operational experience both with crew and vessel management



MV ISLAND DILIGENCE

W2W

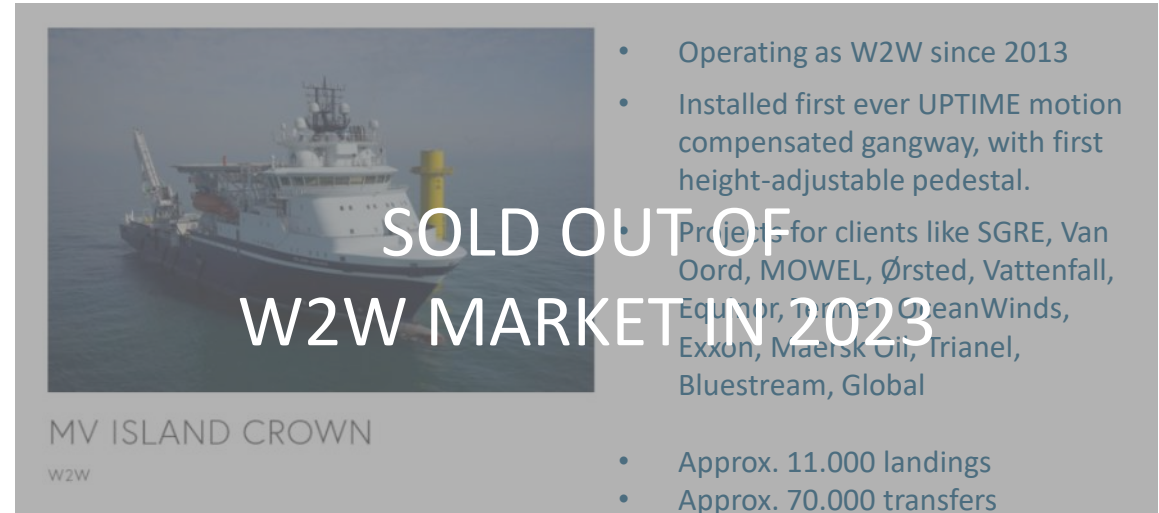
- Operating as W2W since 2018
- Projects for clients like Vattenfall, Prysmian, Trianel, Boskalis, SBM, Exxon, Global, Asso, Equinor, Van Oord.
- Both bottom-fixed and floating offshore wind projects and oil/gas.
- Approx. 9.500 landings
- Approx. 46.000 transfers



MV ISLAND CLIPPER

PSV/W2W

- Operating as W2W since 2019
- Continuous operations on Oseberg H and Hywind Tampen, with PSV supply duties in between, all for Equinor as client.
- Installed with only **Type 1 gangway** currently in operation, including height-adjustable pedestal, and elevator for easy transport of goods.
- Approx. 1.500 landings
- Approx. 10.000 transfers



MV ISLAND CROWN

W2W

- Operating as W2W since 2013
- Installed first ever UPTIME motion compensated gangway, with first height-adjustable pedestal.
- Projects for clients like SGRE, Van Oord, MOWEL, Ørsted, Vattenfall, Equinor, former OceanWinds, Exxon, Maersk Oil, Trianel, Bluestream, Global
- Approx. 11.000 landings
- Approx. 70.000 transfers



MV ISLAND CONDOR

PSV/W2W

- Operating as W2W since 2015
- Project for Perenco, including both A-type and E-type gangway from Ampelmann.
- Operated as PSV prior to mobilization for AkerBP in 2023.
- Being rebuilt to IMR services in 2024, new gangway installed.
- Approx. 12.500 landings
- Approx. 155.000 transfers

Including other vessels with W2W, Island Offshore have in total close to 35.000 landings and 300.000 transfers logged as track record.



OFFSHORE W2W WITH GANGWAY – NOTHING NEW

Accommodation vessels operated for “decades”



Gangways

- **Marine Aluminium** delivered first offshore telescopic gangway in 1979 – to floatel “Treasure Supporter”.
- First Active Motion Compensated (AMC) gangway on Island Crown in 2013 – delivered by **Uptime International** (derived from Marine Aluminium)
- **Ampelmann** founded in 2002 – first demonstrator in 2007 and first commercial job on P-14A platform on Dutch sector (Wintershall)
- In 2018 Ampelmann celebrated 500.000 transfers for BP globally, since its first transfer for the oil major in Trinidad & Tobago in 2010.

Accommodation units with gangway

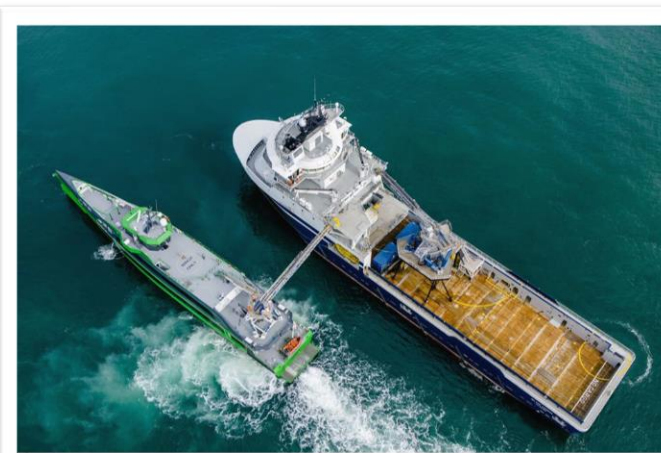
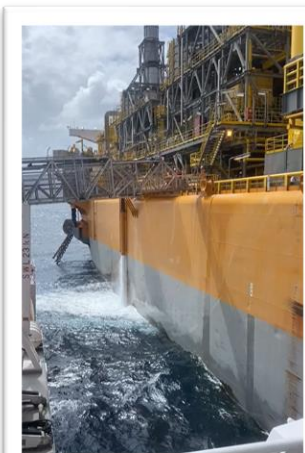
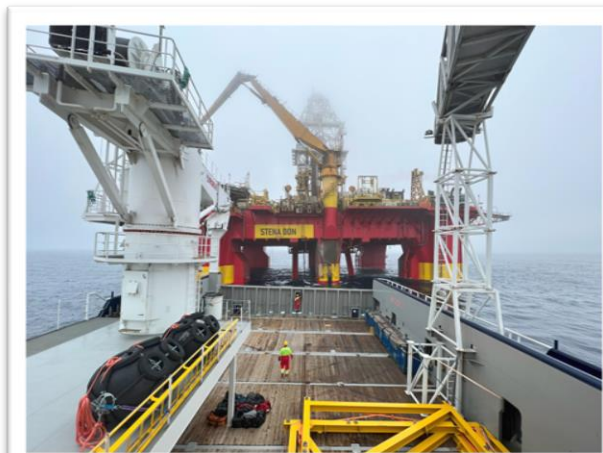
1. Vessel **Dan Swift** about to connect to FPSO Liza Unity (Guyana)
2. Floatel **Treasure Supporter** connected to TCP2 on Frigg field
3. GranEnergia has a fleet of compact semi- submersible vessels, here **Olympia I**
4. Østensjø’s **Edda Fides** in simops on installation
5. Vessel from **Olympic** in operation with **Ampelmann** gangway
6. W2W at Oseberg H with **Island Clipper**



ISLAND OFFSHORE W2W O&G REFERENCE LIST

2012 – 2024: Close to 14.000 landings and 200.000 transfers for Oil & Gas projects

Vessel	Client	Project	Type gangway	Start	End	Landin	Transfe
Island Enforcer	Shell UK	Shearwater and Anasuria	Ampelmann	23.03.2012	24.07.2012	665	10 842
Island Pride	Maersk Oil	Global Producer III	Ampelmann	26.04.2014	27.09.2014	142	5 484
Island Crown	Exxon Mobil	Kara Sea	Uptime 23,4m 001	18.06.2014	22.10.2014	19	645
Island Crown	Maersk Oil	Global Producer III	Ampelmann	01.06.2015	09.09.2015	152	6 095
Island Condor	Perenco	Ravenspurn	Ampelmann A-type	08.07.2015	20.11.2016	2 735	30 671
Island Condor	Perenco	Ravenspurn	Ampelmann E10	21.11.2016	31.03.2022	8 931	118 016
Island Crown	Statoil	Oseberg	Uptime 23,4m 001	24.07.2017	07.10.2017	92	12 390
Island Diligence	Total DK	Tyra	Uptime 23,4m 008	13.02.2019	23.02.2019	16	94
Island Clipper	Equinor	Zephyros	Uptime 23,4m	08.11.2019	10.11.2019	28	0
Island Clipper	Equinor	Oseberg H	Uptime 30,0m, type 1	11.11.2019	04.09.2024	630	7 970
Island Clipper	Equinor	Island Valiant	Uptime 30,0m, type 1	14.12.2019	15.12.2019	41	0
Island Diligence	Chariot	Morocco	Uptime 23,4m 008	09.12.2021	20.01.2022	0	0
Island Diligence	SBM	Guyana FPSO	Uptime 23,4m 008	01.03.2022	25.03.2022	10	2
Island Condor	Neptune Energy	Dutch O&G sector	Ampelmann E10	28.06.2022	10.10.2022	401	4 740
Island Condor	AkerBP	Valhall	Uptime 30,0m #142	01.06.2023	07.12.2023	6	0



FIRST ISLAND OFFSHORE W2W PROJECT

2012: Island Enforcer – Shearwater and Anasuria, UK



Anasuria Cluster

- 127 km East of Aberdeen, UK North Sea
- Anasuria FPSO
- Owner: 50:50 joint venture (JV) between Hibiscus and Ping Petroleum
- Operator: Petrofac

Shearwater Oil & Gas Field

- Central North Sea 245km East of Aberdeen
- Operated by Shell, owned by Shell (55,5%) and NEO (44,5%)

Vessel: Island Enforcer

- Design: ST 257 L CD (Skipsteknisk)
- Built: Bergen Group BMV
- Delivered: 2010
- LOA 122,4m - BEAM 23,0m – DRAFT 7,3m
- Equipped with **Ampelmann** gangway, both **A-** and **E-**type for bumper connections at platform and FPSO (before adjustable pedestal)



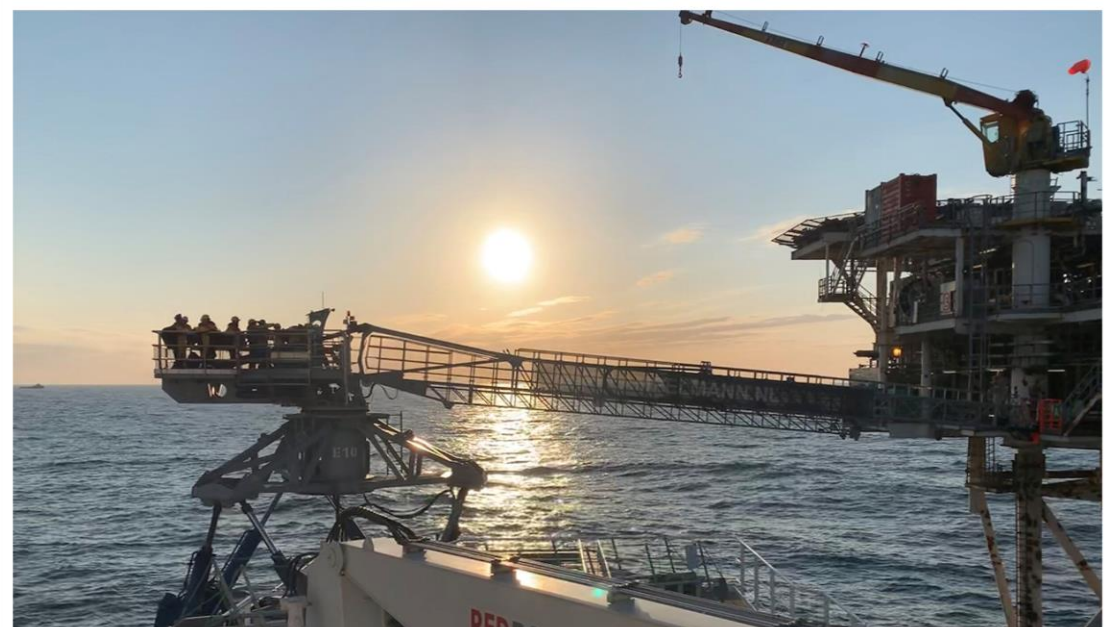
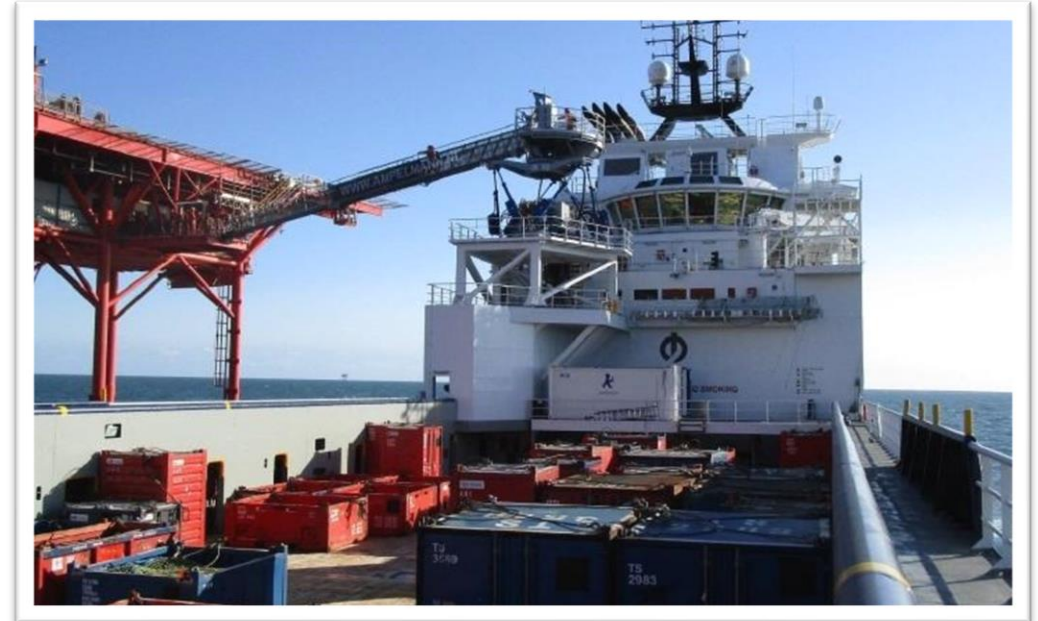
ISLAND CONDOR FOR PERENCO

The **Island Condor** performed W2W operations for **PERENCO** on UK sector O&G project (Ravenspurn gas field) from **2015** to **2022**.

She started out with an **Ampelmann A-type** onboard, located at a specially adapted mezzanine deck on port side. Later she was upgraded with an **Ampelmann E-type** (larger) with a separate (fixed) pedestal installed on deck.

In total **11.666** landings and **148.687** transfers

- Whereof 2.735 landings and 30.671 transfers with A-type, and 8.931 landings and 118.016 transfers with E-type
- Average of 1.667 landings and 21.250 transfer a year



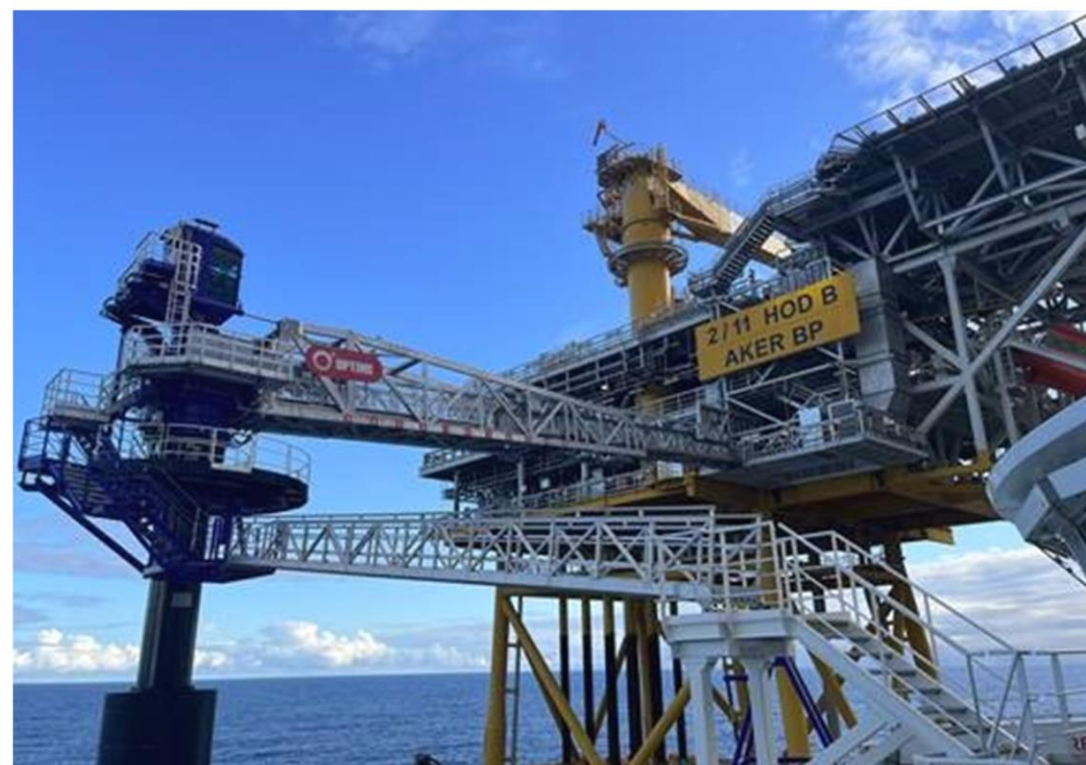
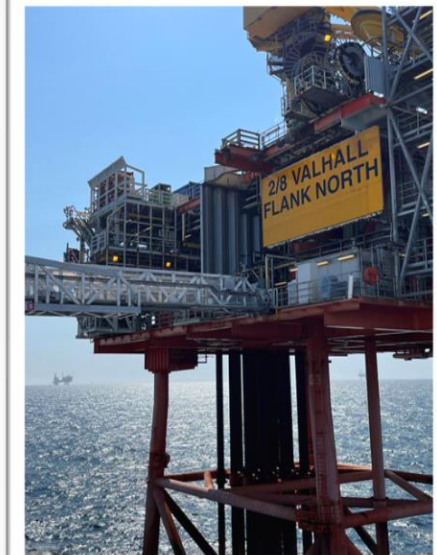
ISLAND CONDOR FOR AKER BP

For Aker BP 2023 campaign, the **Island Condor** was outfitted with a brand-new **Uptime 30,0m** gangway system, mounted directly on a 5,5m adjustable pedestal on deck.

The system was designed to be highly flexible and able to reach connection heights between 16m and 31m within the operable angles.

It was a type 2 gangway prepared with the latest technology for gangway systems and was the first to utilize Uptime's newly developed control system. Purpose of the project was to test operational phases of bumper connections to oil/gas rigs at Valhall area of the North Sea.

Unfortunately, the gangway control system was not ready for this project and ended with not being approved for transfer.



ISLAND CLIPPER FOR EQUINOR

Currently operating at **Oseberg H** since 2019 and **Hywind Tampen** since 2022.

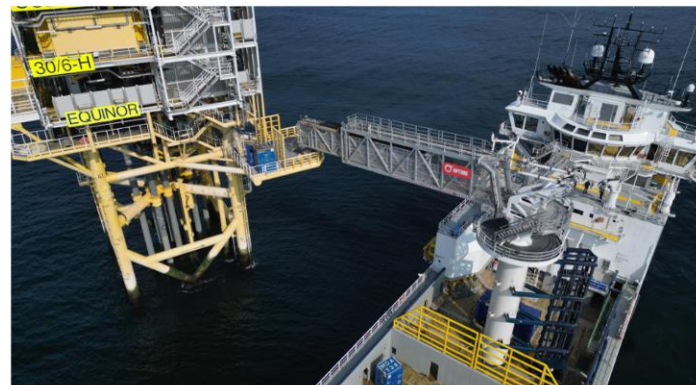
Reference vessel for O&G W2W operations in the North Sea. Sister vessel of Island Condor.

Type 1 gangway from Uptime with both **cone** and **bumper** landing available. This gangway provides extra safety features for personnel.

At **Oseberg H**; performed 630 landings and 7.970 transfers using cone mode. Connected as long as personnel is onboard Oseberg H

At **Hywind Tampen**; performed 802 landings and 1.976 transfers using bumper mode. Shorter connections where vessel sails between several turbines and transfers smaller teams to each.

No injuries and very good feedback from clients and authorities from performed operations.



Cone



Bumper

