



Valhall Flanke South 2/11 Installation Data Card

Location	Valhall Field
Latitude	N 56° 13' 37,4"
Longitude	E 03° 26' 9,4"
Coordinate Datum	WGS 84
Water Depth	66 meters



Marine Hazards	
VFS is Normally Unmanned Installation	
Safety zone 500 m	
Exposed conductor area south side - see drawing page 2	

Specific Marine Hazards

For weather side work, the Aker BP's vessel impact table shall apply for limitations

Prior to entering the 500 m safety zone vessels must send the checklist to Valhall standby vessel by mail

Communications	General	Emergency	Helicopter			
Valhall Control Room	VHF Ch. 16	VHF Ch. 16 +47 51 35 10 00	Communication	118.050/130.550 MHz		
	+47 51 35 10 00		AkerBP Aviation	+ 51 35 80 30 aviation@akerbp.com		
	crcvalhall@akerbp.com		UHF channels vessel - deck			
Valhall OIM	+47 51 35 11 00 val.platformsjef@akerbp.com		PH	Ch. 5	VFN	Ch. 10/11
Valhall FA Logistikk	+47 51 35 10 35 val.fa.logistikk@akerbp.com		IP	Ch. 9	VFW	Ch. 7/10/11
	Deck / Crane	UHF Ch. 10	WP	Ch. 5	VFS	Ch. 10/11
Stand by vessel	VHF Ch. 14/16		PCP	Ch. 6/11	HOD	Ch. 10/11
			Near standby for all above assets			Ch. 1

Crane details	SWL	Radius	Operational Crane Limits	
North East Crane	1/2/3 fall	12/34/60	30 m	Max wind speed for internal and supply vessel handling: 40 knots

Nearby Installations distance					Shore Distances		
Valhall	3 Nm NNW	AkerBP	Embla	9 Nm NW	ConocoP	Stavanger	Approx 180 Nm NE
VFN	6,5 Nm NNW	AkerBP	Eldfisk	11 Nm NW	ConocoP	Aberdeen	Approx 190 Nm WNW
VFW	3 Nm NW	AkerBP	Ekofisk	21 Nm NNW	ConocoP	Bergen	Approx 255 Nm NNE
HOD	3 Nm SSE	AkerBP					

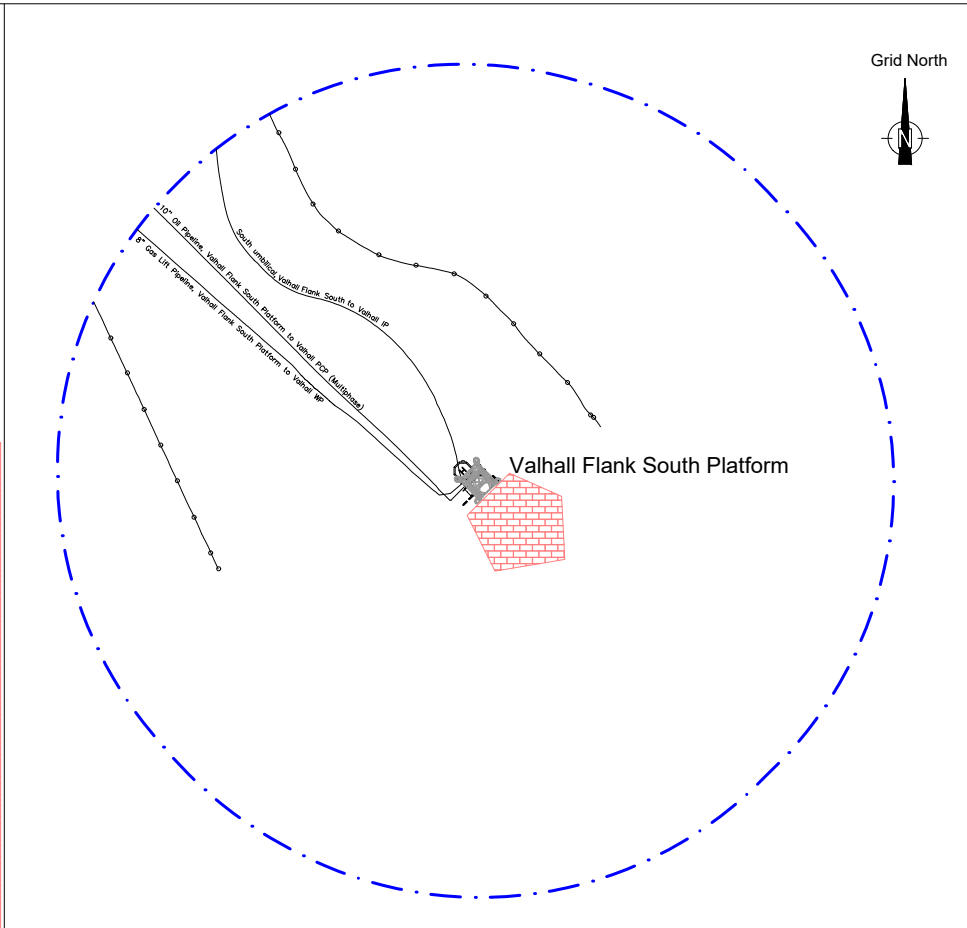
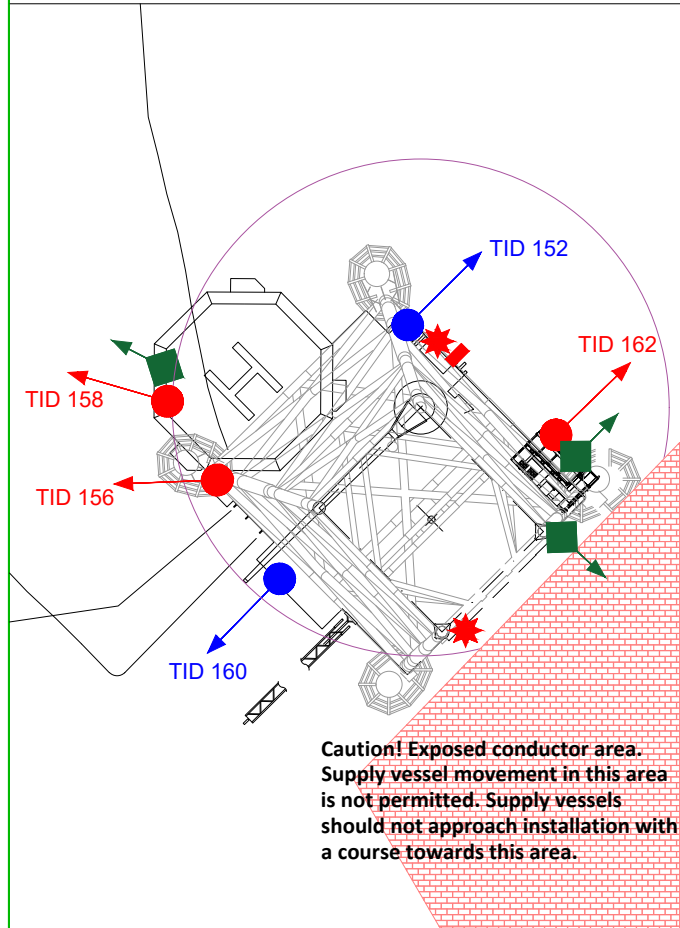
Alarms	Fire & Emergency	Abandon
Sound	Intermittent	Continuous Variable Tone
Light	Flashing Yellow	Flashing Yellow

Bulk Connections		Cargo Transfer Operations	
Potable water	5" Weco	Cargo Transfer Operations to take place according to; 55-000277 - Instructions to Master G-OMO & G-OMO 8-A Safety zone entry checklist Valhall Readiness Support Document VAL-000761, section 3 Prior to commencing bulk operations at VFS, there will be a procedure checklist handed over to the Vessel due to the complex nature of the storage system.	
Drill water	5" Weco		
Diesel	5" Avery Hardol		
Brine/OBM	4" Weco		
Cement	5" Weco		
Barites/ Bentonite	5" Weco		









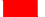

Vessel Co-ordination	
1 hour prior to arrival in the field, contact should be made with;	Valhall standby vessel and Equinor Marine VHF CH 14
Vessel movement within the field are controlled and monitored by;	Valhall FA logistikk
Permission to enter safety zone should be obtained from	Valhall standby vessel (delegated by Valhall OIM)
On entry & exit of the safety zone, establish contact and inform;	Valhall standby vessel and Equinor Marine VHF CH 14

Radius ID
See attached field drawing

Valhall Flank South Platform Topside Reference Systems and Crane Radius



Legend

-  Fanbeam
-  Radius 550
-  Radius 700
-  Prism (single 360 degrees)
-  500m Zone
-  Pipelines
-  LOFS Cables
-  Crane Radius (Max radius = 30 metres)
-  Cargo Hoses
-  Caution! Exposed conductor Area

Notes

Please inform Aker BP Survey and Marine departments of any changes regarding reference system locations and codes.
 Geospatialteam@akerbp.com
 Marinereports@akerbp.com

Valhall Frequency List

PORTABLE UHF RADIOS

CH	Tx freq. (MHz)	Tx PL Tone	Rx Freq. (MHz)	Rx PL Tone	Channel info
1	406.7125	69.3	406.7125	69.3	Near standby operations
5	406.6625	79.7	406.6625	79.7	
6	406.7625	82.5	406.7625	82.5	
7	406.9375	85.4	406.9375	85.4	
9	407.0875	91.5	407.0875	91.5	
10	407.1125	94.8	407.1125	94.8	
11	407.1875	97.4	407.1875	97.4	
13	457.525	-	475.525	-	Marine UHF channel
14	457.550	-	457.550	-	Marine UHF channel
15	457.575	-	457.575	-	Marine UHF channel
16	467.525	-	467.525	-	Marine UHF channel

Valhall Area Vessel Impact Details

Installation	Capacity MJ	Hs = 4m Max Vessel	5000 t	7000 t	10000 t
			Max Hs at given vessel size		
Hod	12,8	4571	3,82	3,12	2,70
Hod B	28	10000	5,66	4,78	4,00
Valhall FN	34,6	10000	6,29	5,32	4,45
Valhall FS	34,6	10000	6,29	5,32	4,45
Valhall FW	28	10000	5,66	4,78	4,00
Valhall IP	50	10000	7,56	6,39	5,35
Valhall PH	50	10000	7,56	6,39	5,35
Valhall WP East	25,7	8214	5,42	4,58	3,83
Valhall WP West	20,2	5236	4,80	4,06	3,40