

<b>Location</b>	Alvheim Field FPSO
<b>Latitude</b>	N 59° 34' 1,0"
<b>Longitude</b>	E 01° 59' 48,6"
<b>Coordinate Datum</b>	WGS 84
<b>Water Depth</b>	120 - 130 meters
<b>Call Sign</b>	LNEJ
<b>LOA / Breath</b>	252 m / 42 m
<b>Marine Hazards</b>	
Safety zone 500m	
Field activities e.g. shuttle tanker	


**Specific Marine Hazards**

FPSO is moored on a turret with Risers & mooring lines rising from the seabed

Communications	General	Emergency	Helicopter	
Alvheim Control	VHF Ch. 77	VHF Ch. 16 <b>+47 51 35 79 70</b>	Communication	118.050 MHz
	+47 51 35 78 00			+ 51 35 80 30
	+47 51 35 78 12		AkerBP Aviation	<a href="mailto:aviation@akerbp.com">aviation@akerbp.com</a>
Marin Supervisor	+47 51 35 79 01	<b>UHF channels vessel - deck</b>		
	<a href="mailto:alvheim-mrro@akerbp.com">alvheim-mrro@akerbp.com</a>	Kran	Ch.	5 and 12
OIM	+47 51 35 78 01			
St. by vessel	<a href="mailto:alv.plattforsjef@akerbp.com">alv.plattforsjef@akerbp.com</a>			
	VHF Ch. 14			

Fwd and aft Crane	SWL	Radius	Operational Crane Limits
Whip line	10 T	42 m	Max wind speed for internal and supply vessel handling: 40 knots
Main hook	30 T	30 m	FPSO movements: Max roll: +/- 1.5° Max pitch: +/- 1.5° Max Hs: 3,0 m
Main hook	10 T	42 m	Cranes working range 7,5 - 42 m. Hoisting capacity 150

Nearby Installations				Shore Distances			
<a href="#">Heimdal</a>	7 Nm E	Equinor	Ringhorne	22 Nm SE	Vår Energi	Stavanger	118 Nm ESE
Bruce	14 Nm NW	BP	Balder	25 Nm SE	Vår Energi	Bergen	120 Nm NE
Beryl	14 Nm W	Apache	<a href="#">Grane</a>	28 Nm SE	Equinor	Aberdeen	194 Nm SW
Ivar Aasen	39 Nm SSE	AkerBP					

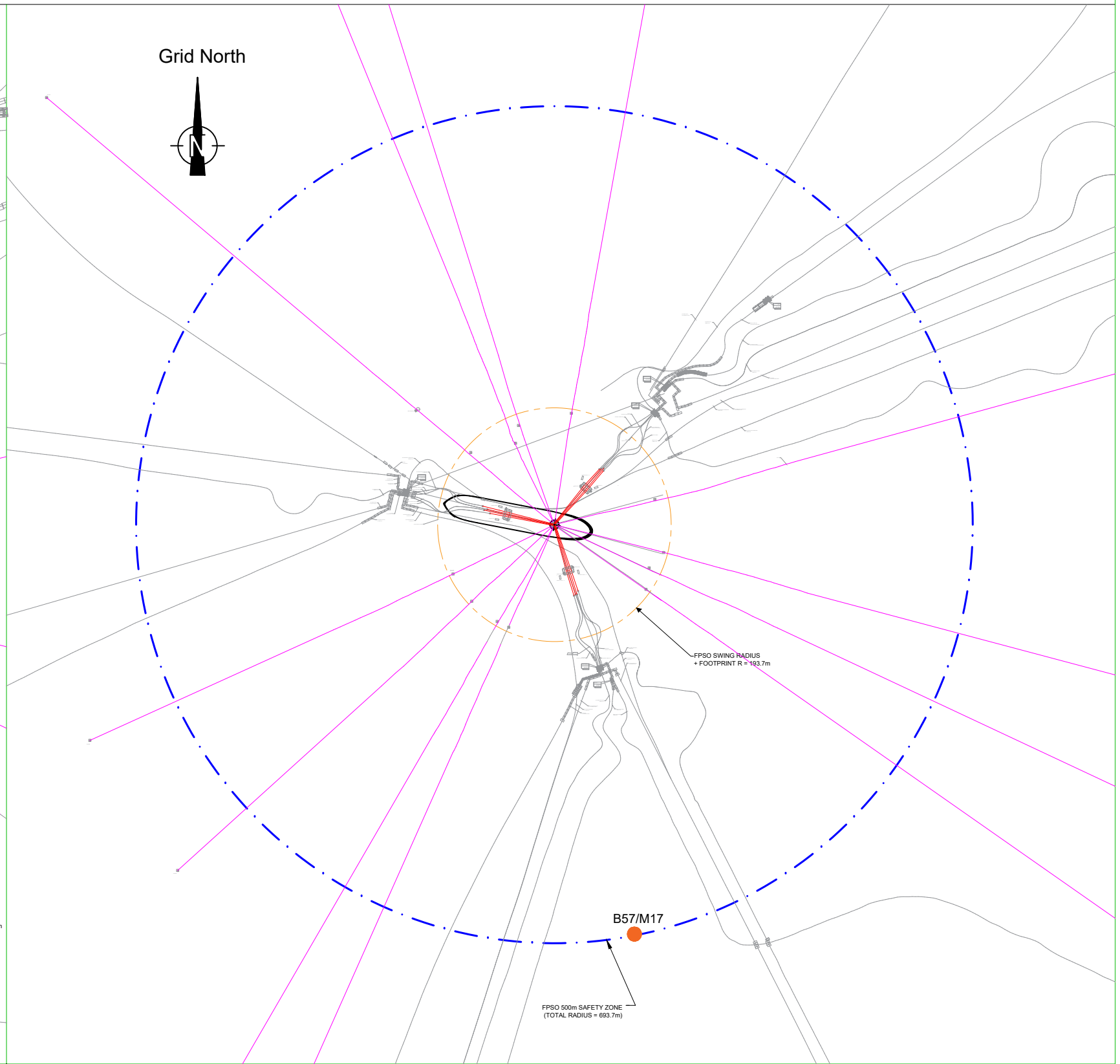
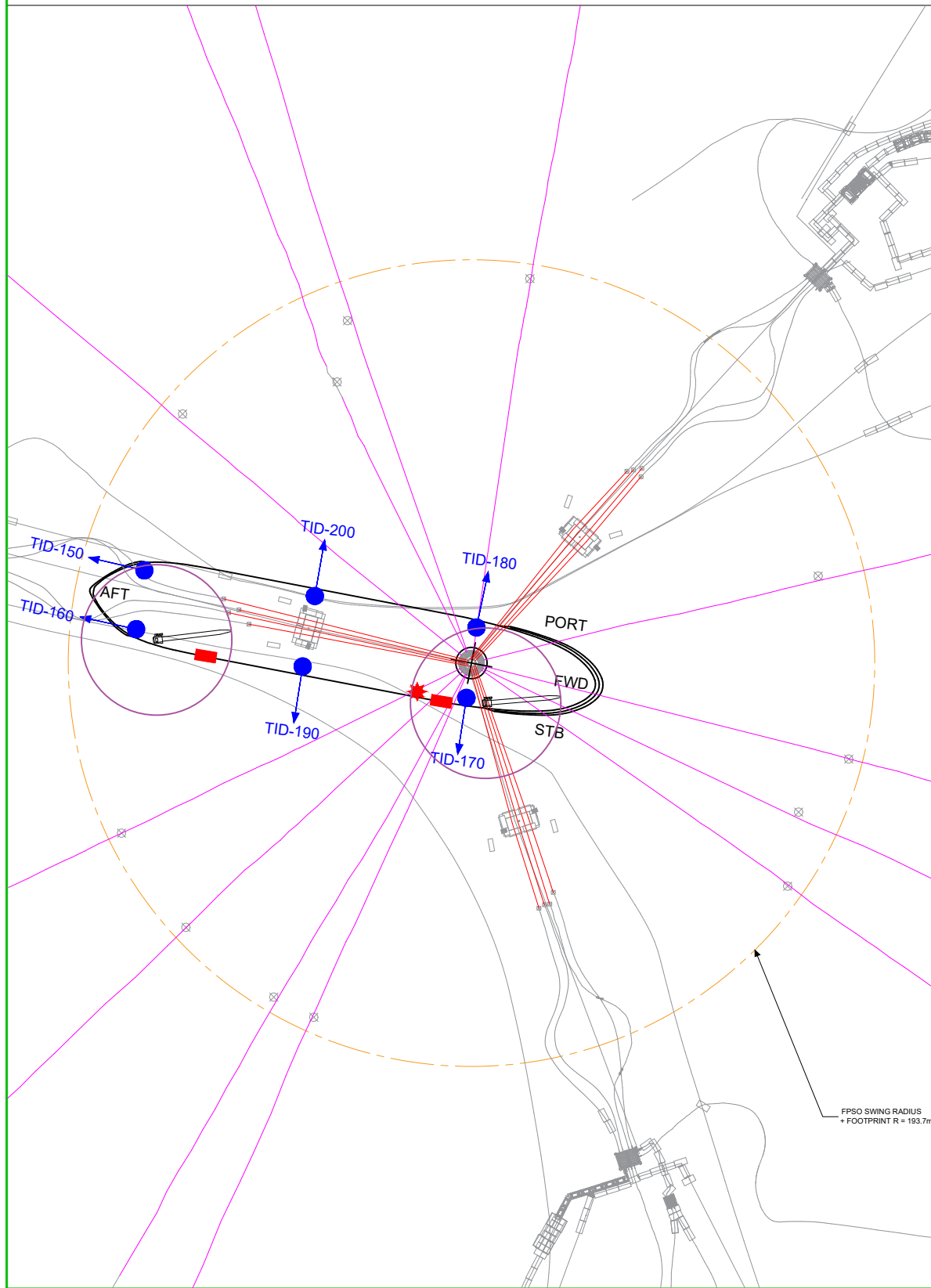
Alarms	Fire & Emergency	Abandon
<b>Sound</b>	Intermittent	Continuous Variable Tone
<b>Light</b>	Flashing Yellow	Flashing Yellow

Bulk Connections	Cargo Transfer Operations
Potable water	4" Weco
Diesel	4" Avery Hardol
Methanol	4" Avery Hardol
	Cargo Transfer Operations to take place according to;
	55-000277 - Instructions to Master
	<a href="#">G-OMO &amp; G-OMO 8-A Safety zone entry checklist</a>

Vessel Co-ordination	
1 hour prior to arrival in the field, contact should be made with;	Alvheim Control
Vessel movement within the field are monitored by;	Equinor Marine
Permission to enter safety zone should be obtained from	Alvheim Control
On entry & exit of the safety zone, establish contact and inform;	Alvheim Control

Radius ID
See attached field drawing
Rev. 07 04.01.2023

# Alvheim FPSO Reference Systems



## Legend

- ★ Fanbeam
- Radius 550
- ◆ Prism
- Pipelines and Cables
- FPSO Safety Zone
- FPSO Swing Radius
- Cargo Hoses
- Mooring Lines
- <sup>B57/M17</sup> Subsea Transponder
- Crane Radius  
Max. radius 48m  
(15T)
- Risers

## Notes

Subsea Transponder B57/M17 position: 443 540.90 E, 6 603 149.36 N

Please inform Aker BP Survey and Marine departments of any changes regarding reference system locations and codes.  
 Geospatialteam@akerbp.com  
 Marinereports@akerbp.com

**ALVHEIM FREQUENCY LIST**

**PORTABLE UHF RADIOS**

Updated 30/01-2007

CH	Tx freq. (MHz)	Tx PL Tone	Rx Freq.(MHz)	Rx PL Tone	Channel Info
5	469.050	162.2	469.050	162.2	Simplex, Crane
6	469.075	-	469.075	-	Offloading
10	457.525	-	457.525	-	Simplex, Public Maritime
11	457.550	-	457.550	-	Simplex, Public Maritime
12	457.575	-	457.575	-	Simplex, Public Maritime
13	467.525	-	467.525	-	Simplex, Public Maritime
14	467.550	-	467.550	-	Simplex, Public Maritime
15	467.575	-	467.575	-	Simplex, Public Maritime

**Alvheim Vessel Impact Details**

Prepared by Eirin Paulsen 11.03.2021

	Capacity [MJ]	Impact speed [m/s]			Design target
		7 500mT	10 000mT	12 500mT	
Side collision - OSV	40*	3.1	2.7	2.4	Not cause penetration of the inner longitudinal bulkhead
Fore ship collision - OSV	24/31**	2.4/2.7	2.1/2.4	1.9/2.1	
Aft ship collision - OSV	137	5.8	5.0	4.5	
Stern - Shuttle tanker collision	450	-	-	-	Not cause penetration of the aft machinery bulkhead

\* Conservative due to model extent

\*\* Reverse stem/bulbous bow