

Platform Name:

Njord A



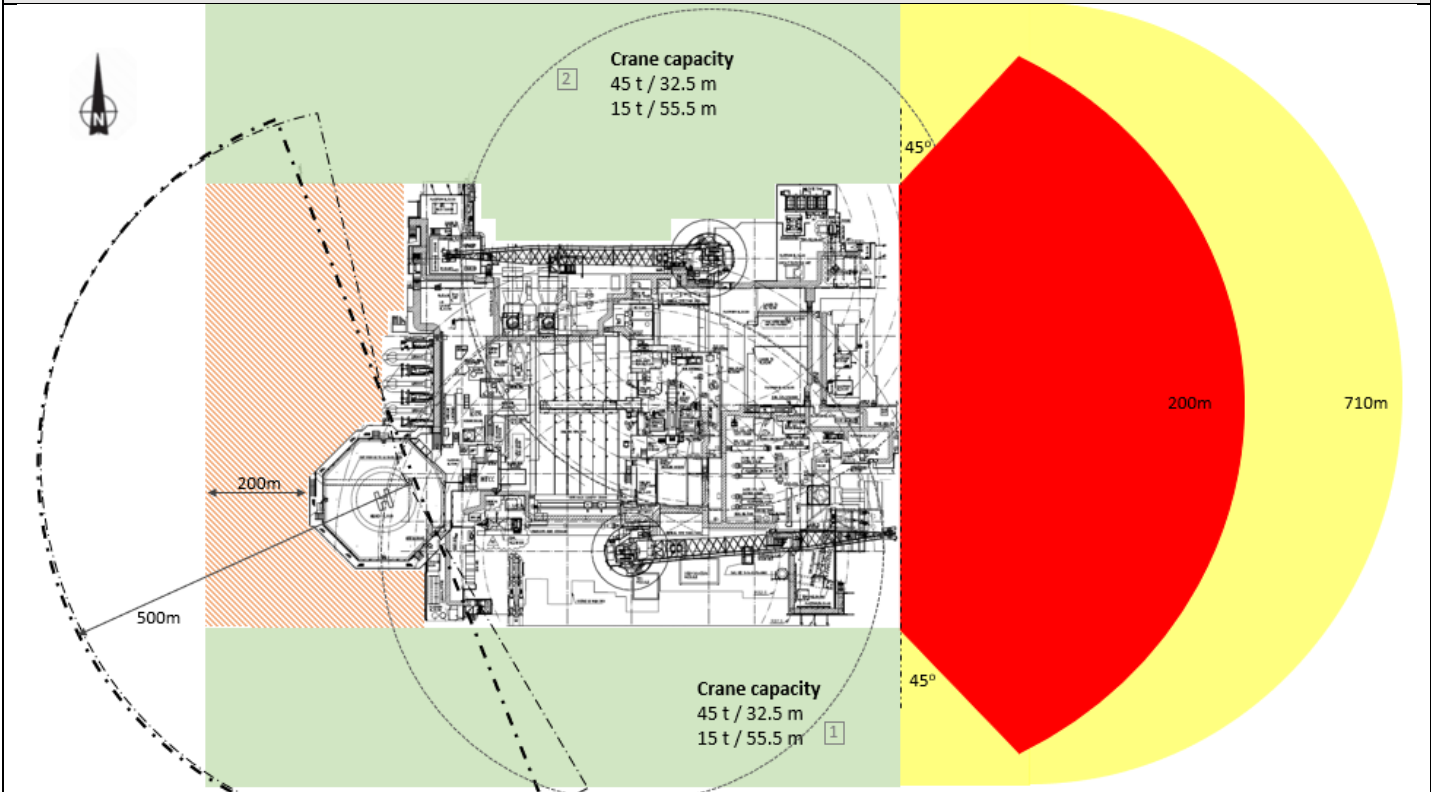
Contact Information

Call sign:	LF5Z	E-mail:	njoskr@equinor.com
MMSI no:	257 074 000	Phone no:	+41 74 86 40 11/ + 47 74 86 40 16
Position datum WGS 84 North, dms:	64°16'14.46" (7.128.620 UTM)	VHF central control room:	10
Position datum WGS 84 East, dms:	7°11'59.39" (412.890 UTM)	UHF central control room:	3

Contact Information cranes


UHF crane 1 (south)	12	UHF crane 3	NA
UHF crane 2 (north)	11	UHF crane 4	NA

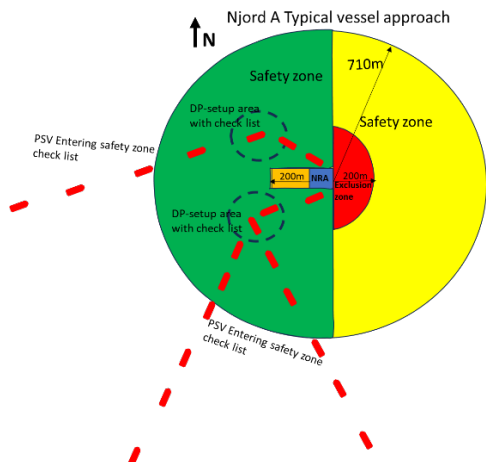
Map with zones (not to scale) - see ARIS R-32669 for operations within exclusion zones



Zone color coding

Color	Meaning	Reason
Green zone:	Loading/offloading zone. Normal process with approval from the Central Control room	Crane coverage
Orange-striped zone:	Caution zone. Entering this zone needs extra approval from Platform Manager in addition to Central Control room	Risk of collision with umbilicals and lifeboat structure.
Red/Yellow zone:	Exclusion zone. Entering this zone needs approved dispensation.	Red zone: Risk of collision with the riser balcony Yellow zone: Risk of dropped objects onto the risers. The zone extends to the riser touchdown + 500m.

Other symbols/markings	
<p>— · — · — · — · —</p> <p>-----</p>	<p>180-degree obstacle free helicopter zone</p> <p>210-degree obstacle free helicopter zone</p>
Platform specific information	
Largest allowed vessel displacement without NMO	8000t
Lowest height from MSL to living quarter or lifeboats:	At 23m draft the distance between sea level and the deck support frame is 7.5m
Lowest bridge height from MSL:	NA
Displacement / Significant wave height -table for vessel operation on weather side of platform	
<p>1. Max Hs=4m on Loward side during offloading/loading</p> <p>2. Max Hs= 5 m on Leward side during offloading/loading</p>	

Additional information	
<ul style="list-style-type: none"> Njord A shall never be used as waypoint (target) during voyage Bow or stern directly towards Njord A is not accepted Entering the safety zone, such that Drift off positioning will be away from Njord A in case PSV loss of power When changing side from north to south the passage shall be at least 200m west of the helideck. Passing on East side is not allowed in red or yellow zone. 	
 <p>The diagram illustrates the typical vessel approach to Njord A. It shows a circular safety zone divided into green and yellow sections. A red 'Exclusion zone' is located near the helideck. Two 'DP-setup area with check list' are shown, each with a 200m HIRA. A 710m radius is indicated for the safety zone. Red dashed lines represent the 'PSV Entering safety zone check list' path.</p>	

Owner: Marine Technology Department Equinor		
Rev. No	Date	Name
0	11.02.2021	inand
1	31.01.2022	inand
2	09.12.2024	ralpb
3	14.01.2025	ralpb